

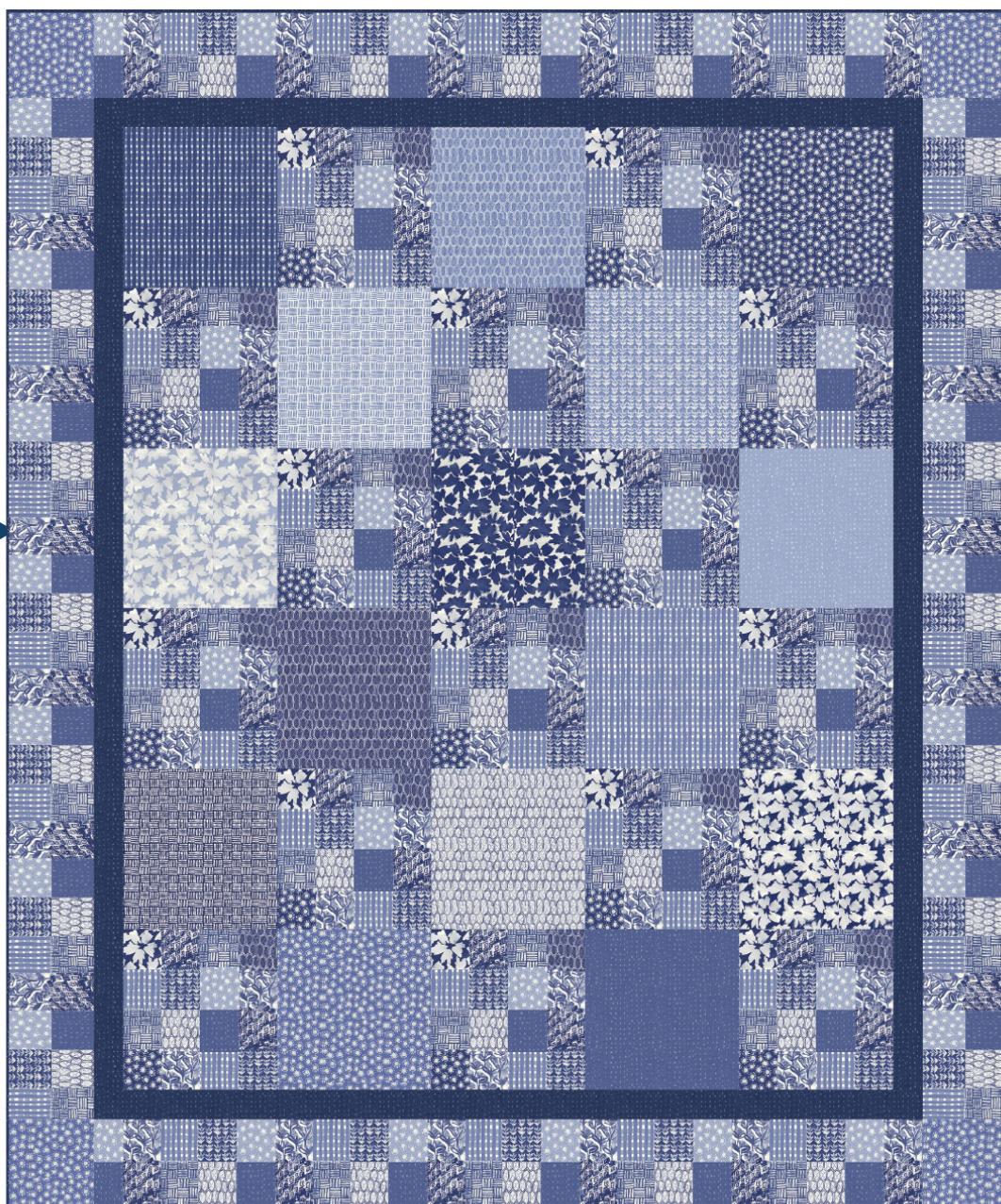
Singing The Blues

Designed by Heidi Pridemore of The Whimsical Workshop

Featuring Ella by Whistler Studios

SIZE: 74-5/8" x 90"

FREE
PROJECT



THIS IS A DIGITAL REPRESENTATION OF THE QUILT TOP, FABRIC MAY VARY.

PLEASE NOTE: BEFORE MAKING YOUR PROJECT, CHECK FOR ANY PATTERN UPDATES AT WINDHAMFABRICS.COM'S FREE PROJECTS SECTION.



WINDHAM FABRICS

e: info@windhamfabrics.com
p: 201-659-0444 • f: 201-659-9719



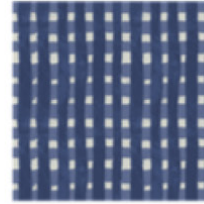
Singing The Blues

Estimated Fabric Requirements:

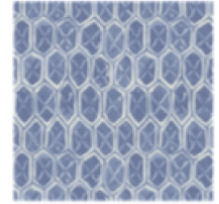
- 3 ½ yards – 41851-X Multi
- Fat Quarter – 41853-1 Dark Blue
- Fat Quarter – 41858-3 Light Blue
- Fat Quarter – 41855-1 Dark Blue
- Fat Quarter – 41857-3 Light Blue
- Fat Quarter – 41854-3 Light Blue
- Fat Quarter – 41852-3 Light Blue
- Fat Quarter – 41852-1 Dark Blue
- Fat Quarter – 41856-3 Light Blue
- Fat Quarter – 41858-1 Dark Blue
- Fat Quarter – 41853-3 Light Blue
- Fat Quarter – 41857-1 Dark Blue
- Fat Quarter – 41858-2 White
- Fat Quarter – 41852-2 White
- ½ yard – 41855-4 Medium Blue
- Fat Quarter – 41856-4 Medium Blue
- 1 ¼ yards – 41856-1 Dark Blue
- 5 ½ yards – 41851-X Multi



41851-X Multi



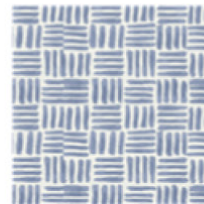
41853-1 Dark Blue



41858-3 Light Blue



41855-1 Dark Blue



41857-3 Light Blue



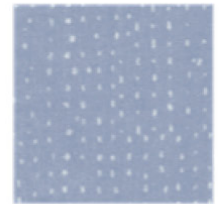
41854-3 Light Blue



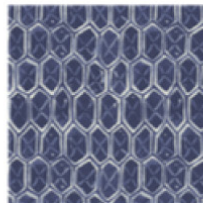
41852-3 Light Blue



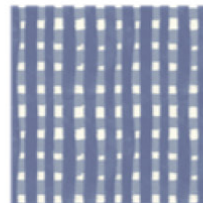
41852-1 Dark Blue



41856-3 Light Blue



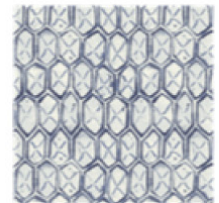
41858-1 Dark Blue



41853-3 Light Blue



41857-1 Dark Blue



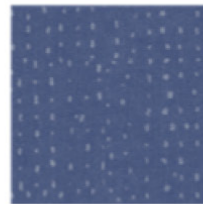
41858-2 White



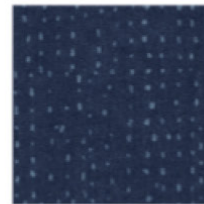
41852-2 White



41855-4 Medium Blue



41856-4 Medium Blue



41856-1 Dark Blue



41851-X Multi



Singing The Blues

Cutting Instructions:

Fabric A: Patchwork Blocks – Multi

- Fussy cut eight strips x WOF. Each strip should be four blocks wide plus $\frac{1}{4}$ " seam allowance. (*Our strips were $6\frac{3}{4}$ " wide.*) These strips are for the outer border and will be cut after the center of the quilt is sewn.
- Fussy cut fifteen blocks. Each block should be a 4-block by 4-block rectangle plus $\frac{1}{4}$ " seam allowance (Fig. 1). (*Our blocks measured approximately $12\frac{1}{8}$ " x $12\frac{3}{4}$ ".*)

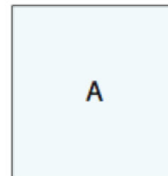


Fig. 1

Fussy cut (15) blocks
Adding a $\frac{1}{4}$ " seam allowance
4 blocks across x 4 blocks down.

Note: Cut one block equal to one of the fifteen rectangles from Fabric A from each of the Fabrics B through P.

Fabric B: Plaid – Dark Blue

- Cut one strip, approximately $12\frac{1}{8}$ " x $12\frac{3}{4}$ " to match your Fabric A rectangle.

Fabric C: Tiles – Light Blue

- Cut one strip, approximately $12\frac{1}{8}$ " x $12\frac{3}{4}$ " to match your Fabric A rectangle.

Fabric D: Dots – Dark Blue

- Cut one strip, approximately $12\frac{1}{8}$ " x $12\frac{3}{4}$ " to match your Fabric A rectangle.

Fabric E: Grid – Light Blue

- Cut one strip, approximately $12\frac{1}{8}$ " x $12\frac{3}{4}$ " to match your Fabric A rectangle.

Fabric F: Tulips – Light Blue

- Cut one strip, approximately $12\frac{1}{8}$ " x $12\frac{3}{4}$ " to match your Fabric A rectangle.

Fabric G: Floral – Light Blue

- Cut one strip, approximately $12\frac{1}{8}$ " x $12\frac{3}{4}$ " to match your Fabric A rectangle.

Fabric H: Floral – Dark Blue

- Cut one strip, approximately $12\frac{1}{8}$ " x $12\frac{3}{4}$ " to match your Fabric A rectangle.

Fabric I: Dashes – Light Blue

- Cut one strip, approximately $12\frac{1}{8}$ " x $12\frac{3}{4}$ " to match your Fabric A rectangle.

Fabric J: Tiles – Dark Blue

- Cut one strip, approximately $12\frac{1}{8}$ " x $12\frac{3}{4}$ " to match your Fabric A rectangle.

Fabric K: Plaid – Light Blue

- Cut one strip, approximately $12\frac{1}{8}$ " x $12\frac{3}{4}$ " to match your Fabric A rectangle.



Singing The Blues

Cutting Instructions - Continued:

Fabric L: Grid – Dark Blue

- Cut one strip, approximately 12 1/8" x 12 3/4 to match your Fabric A rectangle.

Fabric M: Tiles – White

- Cut one strip, approximately 12 1/8" x 12 3/4 to match your Fabric A rectangle.

Fabric N: Floral – White

- Cut one strip, approximately 12 1/8" x 12 3/4 to match your Fabric A rectangle.

Fabric O: Dots – Medium Blue

- Cut one strip, approximately 12 1/8" x 12 3/4 to match your Fabric A rectangle.
- Cut one strip, approximately 6 3/4" x WOF. (*Strip should be the same size as the border strips from Fabric A.*) Sub-cut the strip into four squares.

Fabric P: Dashes – Medium Blue

- Cut one strip, approximately 12 1/8" x 12 3/4 to match your Fabric A rectangle.

Fabric Q: Dashes – Dark Blue

- Cut eight 2 1/2" x WOF strips for the inner border.
- Cut nine 2 1/2" x WOF strips for the binding.

Backing: Patchwork Blocks – Multi

- Cut two 98" x WOF strips. Sew the strips together and trim to 83" x 98" for the back.

Quilt Assembly – *Refer to the Quilt Layout while assembling the quilt top:*

1. Sew three assorted blocks and two Fabric A blocks together, alternating them, to make Row One. Repeat to make Rows Three and Five.
2. Sew three Fabric A blocks and two assorted blocks together, alternating them, to make Row Two. Repeat to make Rows Four and Six.
3. Sew the six rows together, in numerical order, to make the quilt top.
4. Sew four 2 1/2" x WOF Fabric Q strips together end to end with diagonal seams. Measure the sides of the quilt top and cut two strips equal to that measurement and sew one strip to each side of the quilt top.
5. Sew four 2 1/2" x WOF Fabric Q strips together end to end with diagonal seams. Measure the top and the bottom of the quilt top. Cut one strip for the top and one for the bottom equal to that measurement and sew the strips to the quilt top.

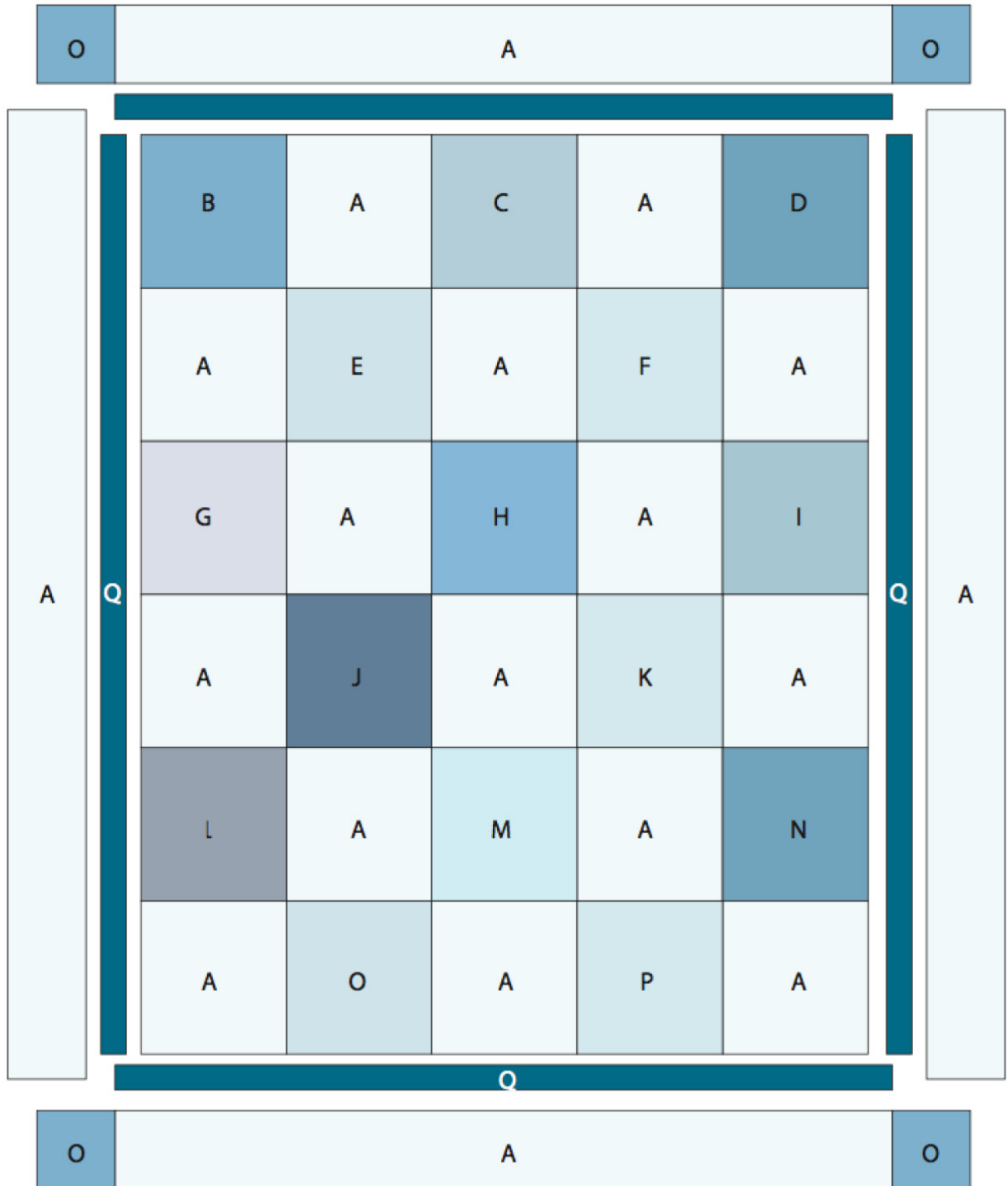


Singing The Blues

6. Sew four Fabric A strips together end to end. Measure the sides of the quilt top and cut two strips equal to that measurement and sew one strip to each side of the quilt top.
7. Sew four Fabric A strips together end to end. Measure the top and bottom of the quilt top. Cut two strips equal to that measurement less the length of the Fabric O squares. Sew the Fabric O squares to each end of the two Fabric A strips and sew the strips to the quilt top.
8. Layer and quilt as desired.
9. Sew the nine 2 1/2" x WOF Fabric Q strips together, end to end with 45-degree seams, to make the binding. Fold this long strip in half, lengthwise with wrong sides together, and press.
10. Bind as desired.



Singing The Blues



Quilt Layout